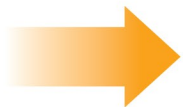
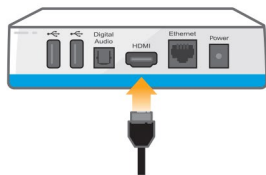


AirTV™ Player

First, set up your
AirTV Player

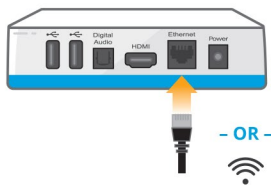


1



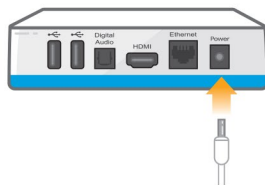
Connect AirTV Player... to your TV using the included HDMI cable.

2



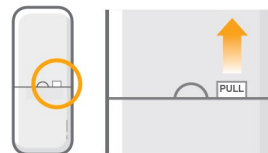
Connect to Internet... using your own Ethernet cable from your router. Or connect to your WiFi network during on-screen setup.

3



Connect to power... and the light on the front of the AirTV Player will turn on.

4



Get the remote ready... by pulling the plastic tab to activate the batteries.

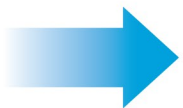
5



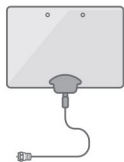
Complete on-screen setup... by following the prompts, and logging in to Sling TV and Google (you can create an account during setup if you need to).

AirTV™ Adapter

Next, set up your
AirTV Adapter

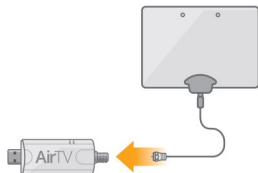


6



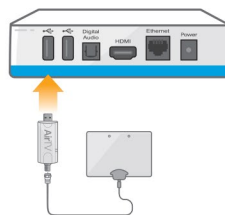
Set up your OTA antenna... by placing it in the best location in your home. See *Antenna Tips* for additional help.

7



Connect AirTV Adapter... to your antenna using a coax cable (not included).

8



Connect AirTV Adapter... to your AirTV Player directly or with the included USB extension cable.

9



Scan for OTA channels... by following the on-screen prompts.

10



Start watching live OTA channels! If you don't see all your OTA channels, visit AirTV.net/Help.